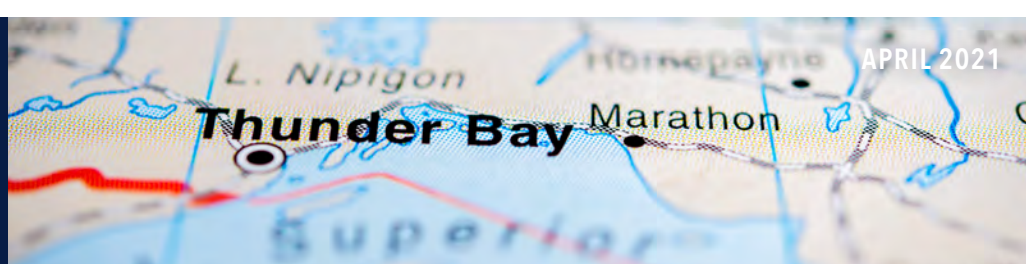




**CLEAN AIR
METALS INC**

TSXV AIR
OTCQB CLRMF
FRA CKU

CLEANAIRMETALS.CA



APRIL 2021

Clean Air Metals' flagship asset is our 100% owned Thunder Bay North Palladium-Platinum-Copper-Nickel Project which includes the Current Lake and Escape Lake intrusions and related deposits.

Current Lake ("CL") Intrusion

- Indicated Resource of 16,285,396 tonnes at an average grade of 3.5 g/t PdEq containing 1,834,158 ounces.
- High grade massive sulphide potential at CL including an intersection of 2.6 meters of 97.98 g/t Pd+Pt+Au and 14.9% Cu+Ni.

Escape Lake ("EL") Intrusion

- Inferred Resource of 9,852,138 tonnes at an average grade of 2.1 g/t PdEq containing 663,660 ounces PdEq.
- Initial discovery of 33.4 meters at 7.28 g/t Pt+Pd and 2.26% Cu+Ni.

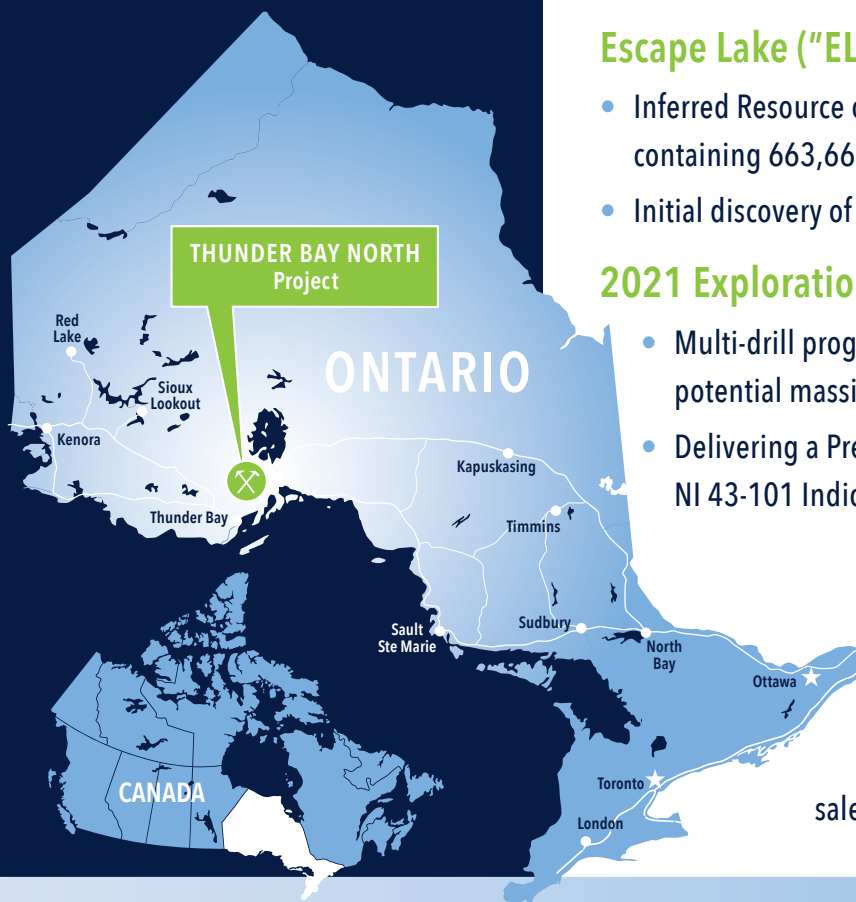
2021 Exploration Program

- Multi-drill program expanding the Escape lake Deposit, targeting potential massive sulphide anomalies.
- Delivering a Preliminary Economic Assessment ("PEA") on the new NI 43-101 Indicated underground resource on the Current Lake Deposit.

Social License to Operate through agreement with three First Nation indigenous communities.

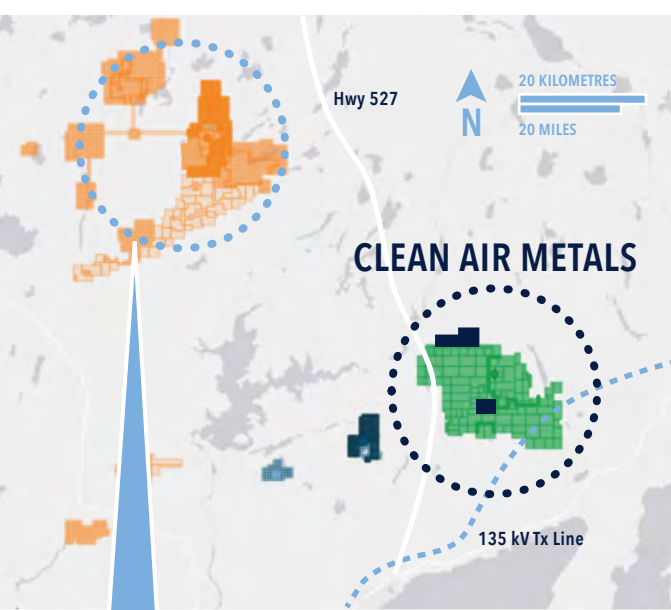
Mr. Jim Gallagher, PEng, Executive Chair

– most recently CEO of North American Palladium at sale of company to Impala Platinum Holdings for \$1 Billion.

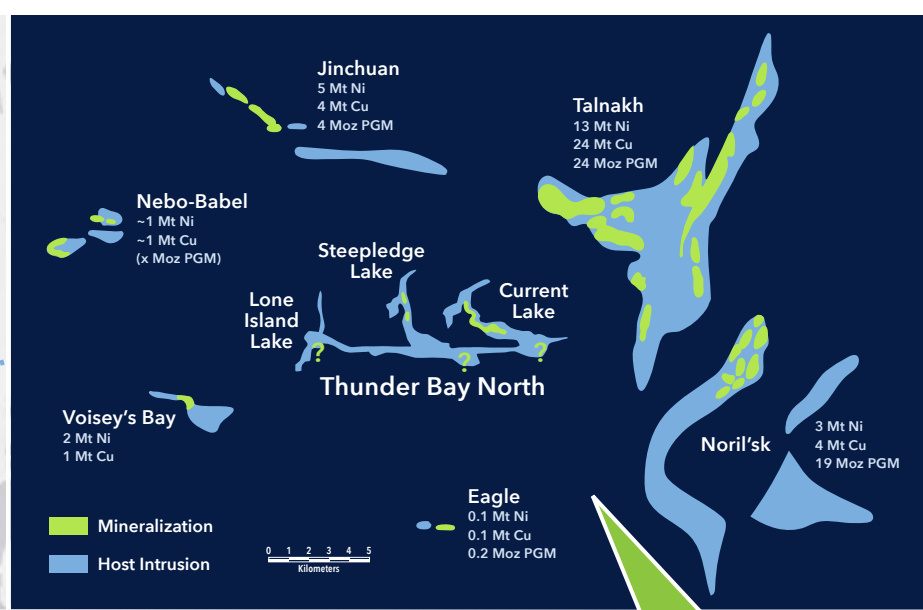


Grade

Category	Tonnes	Pt g/t	Pd g/t	Au g/t	Ag g/t	Rh g/t	Co g/t	Cu %	Ni %	PtEq g/t	PdEq g/t
Indicated - Current Lake	11,999,177	1.48	1.40	0.07	1.32	0.04	137	0.28	0.17	5.79	3.44
Indicated - Escape Lake	4,286,220	0.92	1.18	0.12	2.45	0.06	209	0.52	0.28	6.16	3.67
TOTAL INDICATED RESOURCE	16,285,396	1.33	1.34	0.08	1.62	0.05	156	0.34	0.20	5.89	3.50
Inferred - Current Lake	6,406,960	0.68	0.65	0.06	0.95	0.01	123	0.30	0.14	3.40	2.02
Inferred - Escape Lake	3,445,179	0.64	0.73	0.07	1.13	0.00	173	0.33	0.18	3.75	2.23
TOTAL INFERRRED RESOURCE	9,852,138	0.67	0.68	0.07	1.01	0.01	140	0.31	0.15	3.52	2.10



Impala Canada Lac des Iles Mine
~5M oz Palladium (75M tonnes @ 2.14g/t Pd)



Footprints (to Scale) of Magma Conduits
Hosting "World Class" Ni-Cu-(PGE) Deposits

Thunder Bay North

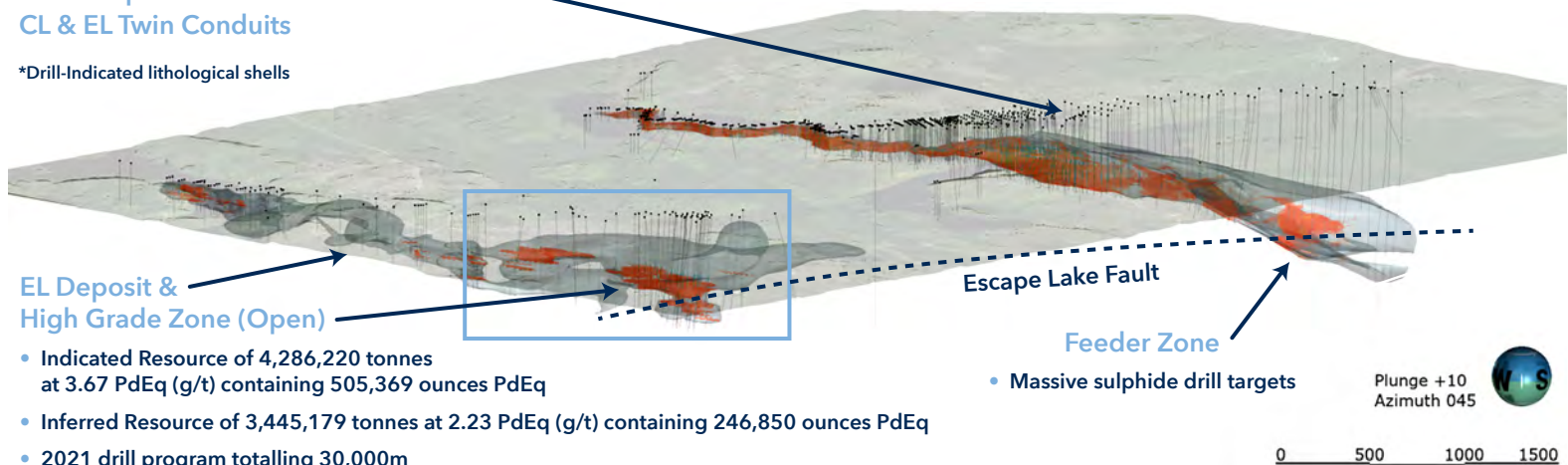
3D Oblique View of
CL & EL Twin Conduits

*Drill-Indicated lithological shells

CL Deposit

- Indicated Resource of 11,999,177 tonnes at 3.44 PdEq (g/t) containing 1,328,789 ounces PdEq

- Inferred Resource of 6,406,960 tonnes at 2.02 PdEq (g/t) containing 416,810 ounces PdEq
- 2021 drill program totalling 10,000m



EL Deposit & High Grade Zone (Open)

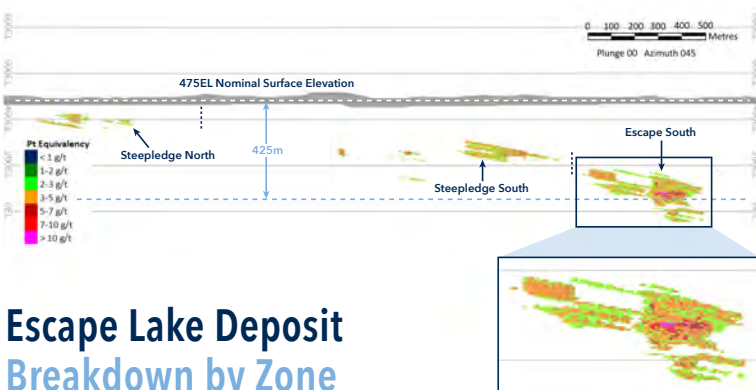
- Indicated Resource of 4,286,220 tonnes at 3.67 PdEq (g/t) containing 505,369 ounces PdEq
- Inferred Resource of 3,445,179 tonnes at 2.23 PdEq (g/t) containing 246,850 ounces PdEq
- 2021 drill program totalling 30,000m

Escape Lake Fault

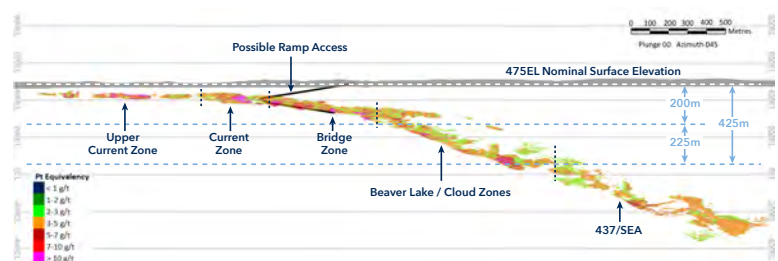
Feeder Zone

- Massive sulphide drill targets

Plunge +10
Azimuth 045



Escape Lake Deposit Breakdown by Zone



Current Lake Deposit Breakdown by Zone

Abraham Drost CEO
807.252.7800
adrost@cleanairmetals.ca

Jim Gallagher Executive Chairman
705.690.7997
jgallagher@cleanairmetals.ca

TSXV AIR
OTCQB CLRMF
FRA CKU

CLEANAIRMETALS.CA



1004 Alloy Drive, Thunder Bay, Ontario P7B 6V1